



## Plan Vertical Concept

Double Convectector Type 22

Height mm	Length mm	Henrad Code	Heat emissions	
			Watts	Btu/hr
<b>1800</b>	400	4282204	1476	5036
	500	4282205	1845	6295
	600	4282206	2214	7554

Btu/hr @  $\Delta t 50^{\circ}\text{C}$

Working pressure:  
Tested to withstand 10.0 bar

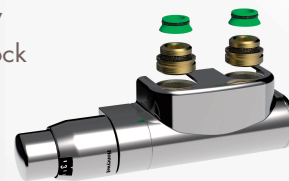


For technical and installation  
information visit our website  
[www.henrad.co.uk/downloads](http://www.henrad.co.uk/downloads)



Plan Vertical Concept is only available  
in Slate grey RAL A7015.

**Centre Tap TRV**  
Available from stock



UIN	Henrad Description
14531310	Centre Tap TRV Straight White
14531410	Centre Tap TRV Straight Chrome
14531510	Centre Tap TRV Angled L White
14531610	Centre Tap TRV Angled L Chrome
14531710	Centre Tap TRV Angled R White
14531810	Centre Tap TRV Angled R Chrome

## Technical information

### Testing and Operating Pressures

Henrad Plan Vertical Concept has been independently tested to ensure these radiators perform to a maximum working pressure of 10.0 bar.

### Connections

Henrad Plan Vertical Concept has 4 x 1/2" BSP connections (BOE) as standard.

### Paint Process

Two coat paint process, each Henrad radiator is subjected to a multi-stage cleaning and paint process.

The final powder coat is Slate grey (RAL A7015) which is stoved and cooled to give a perfect finish.

### Water Treatment

Installation of the system should be properly flushed and fitted in accordance with the British Code of Practice for the Treatment of Water in Domestic Hot Water Central Heating Systems.

### Warranty

Henrad Plan Vertical Concept comes with a 5 year manufacturer's warranty.

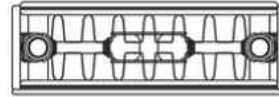
Henrad (UK) Limited, Marriott Road,  
Mexborough, South Yorkshire S64 8BN.  
Telephone: 0800 876 6813

[www.henrad.co.uk](http://www.henrad.co.uk)

## Henrad Plan Vertical Concept

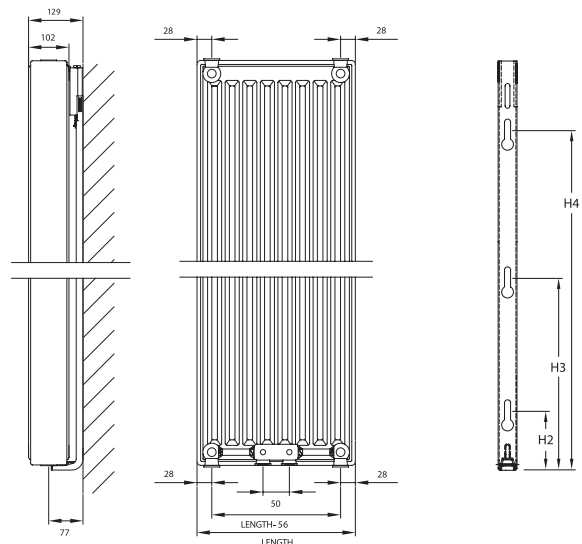
### Wall Mounting Information

All dimensions in mm.



### Mounting Bracket Information

All dimensions in mm.



Height	H2	H3	H4
1800	89	849	1609

### Connections

Each radiator comes with 1/2" inlet connections as standard.

### Lug Positions

All dimensions in mm.

Length	400	500	600
	110	160	210