

Prices
exclude
VAT

Verona Towel Rail

Height mm	Length mm	Henrad Code	UIN Colour*	Heat emissions Watts Btu/hr	Henrad Price
796	450	437902450	437902451	369 1259	£311.47
	600	437902600	437902601	483 1648	£331.81
1121	450	431102450	431102451	503 1716	£368.67
	600	431102600	431102601	658 2245	£389.02
1446	450	431402450	431402451	639 2180	£438.60
	600	431402600	431402601	834 2846	£458.94
1706	450	431702450	431702451	749 2556	£591.15
	600	431702600	431702601	975 3327	£611.49

Btu/hr @ $\Delta t 50^{\circ}\text{C}$

Colour options available

*Price of coloured radiators are available on request.
When a coloured radiator has been ordered it cannot be cancelled or returned.
All coloured radiators have up to an 8 week lead time from date of order.

Tube Dimensions



Working pressure:
Tested to withstand 4 bar



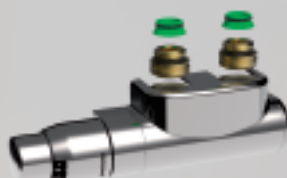
For technical and installation
information visit our website
www.henrad.co.uk/downloads



Colour illustrated Pastel orange RAL A2003

Centre Tap TRV

Available from stock



UIN	Henrad Description	Henrad Price
145313	Centre TRV Set Straight White	£50.00
145314	Centre TRV Set Straight Chrome	£50.00
145315	Centre TRV Set Angled L White	£50.00
145316	Centre TRV Set Angled L Chrome	£50.00
145317	Centre TRV Set Angled R White	£50.00
145318	Centre TRV Set Angled R Chrome	£50.00



Technical information

Testing and Operating Pressures

Henrad Verona Towel Rail has been independently tested to ensure these radiators perform to a maximum working pressure of 4 bar.

Connections

Henrad Verona Towel Rail has 4 x 1/2" BSP connections as standard.

Paint Process

Two coat paint process, each Henrad radiator is subjected to a multi-stage cleaning and paint process.

The final powder coat is Traffic white (RAL A9016) which is stoved and cooled to give a perfect finish. All radiators are illustrated in Traffic white unless stated.

Colour Options

Colour options are available, see colour page.

Water Treatment

Installation of the system should be properly flushed and fitted in accordance with the British Code of Practice for the Treatment of Water in Domestic Hot Water Central Heating Systems.

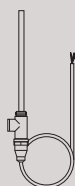
Warranty

Henrad Verona Towel Rail comes with a 5 year manufacturer's warranty.

Heating Element

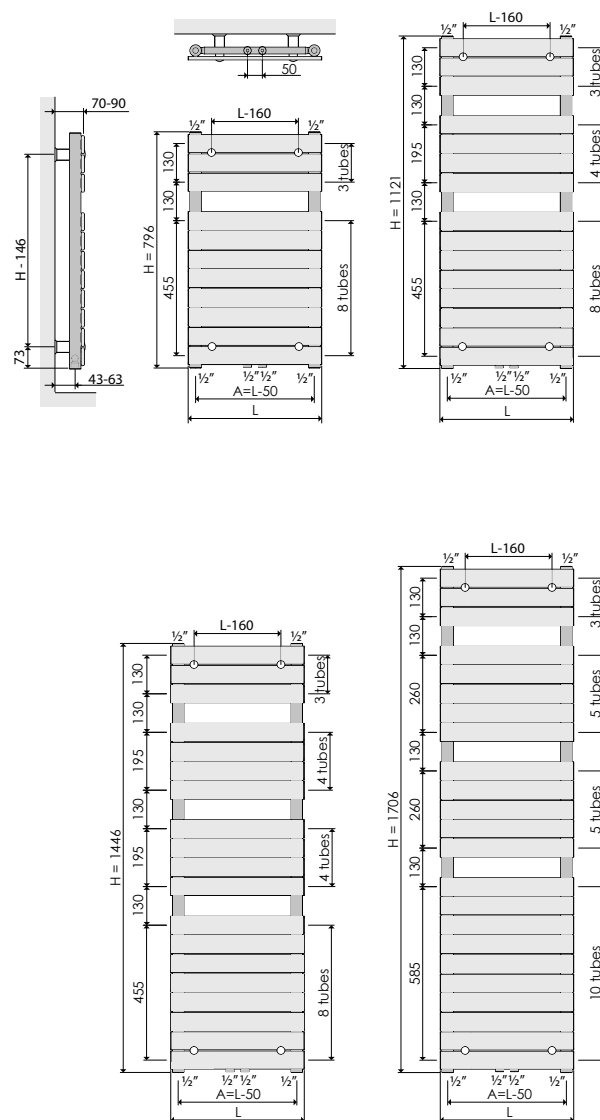
Option available.

For more information contact the sales office on 0844 543 6200



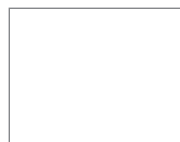
Verona Towel Rail

All dimensions in mm unless stated.

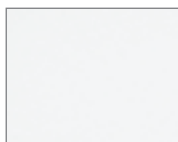


Colour Range

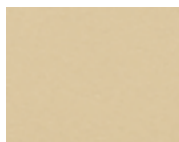
Natural Colour



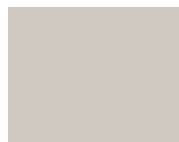
NT110
Papyrus white
510110



NT120
Pearl white
510120



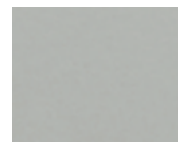
NT130
Champagne
510130



NT140
Beige
510140



NT150
Beige grey
510150



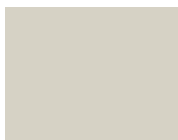
NT160
Pebble grey
510160



NT170
Quartz grey
510170



SN110
Cream white
530110



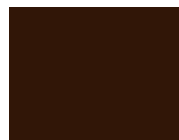
SN120
Cream
530120



SN130
Mocca
530130



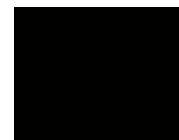
SN140
Bordeaux
530140



SN150
Sepia
530150



SN160
Pale blue
530160

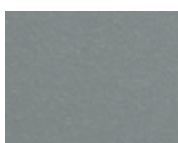


SN170
Black
530170

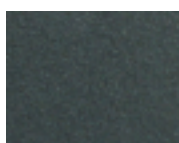
Metallic Colour



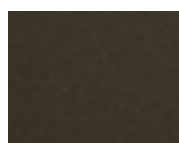
ML110
Dove grey
520110



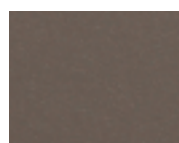
ML120
Titanium grey
520120



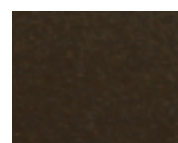
ML130
Blue grey
520130



ML140
Granite
520140



ML150
Cappuccino
520150



ML160
Terra brown
520160



ML170
Graphite black
520170

RAL Colour



A1004
Golden yellow
541004



A2003
Pastel orange
542003



A3002
Carmine red
543002



A3003
Robin red
543003



A5002
Ultramarine blue
545002



A6018
Yellow green
546018



A7001
Silver grey
547001



A7011
Iron grey
547011



A7016
Anthracite grey
547016



A7030
Stone grey
547030



A7035
Light grey
547035



A8017
Chocolate brown
548017



A9003
Signal white
549003



A9005
Jet black
549005



A9016
Traffic white



A7015
Slate grey
*Only available for
Column Concept

The colours shown throughout the brochure are reproduced as accurately as this process will allow and can be made to order on the identified products.

Price of coloured radiators are available on request. When a coloured radiator has been ordered it cannot be cancelled or returned. All coloured radiators have up to an 8 week lead time from date of order.