

## Technical information

### Testing and Operating Pressures

Henrad Arno Towel Rail Range has been independently tested to ensure radiators perform to a maximum working pressure of 6 bar.

### Connections

Henrad Arno Towel Rail Range has 4 x 1/2" BSP connections as standard.

### Paint Process

Two coat paint process, each Henrad radiator is subjected to a multi-stage cleaning and paint process.

The final powder coat is Traffic white (RAL A9016) which is stoved and cooled to give a perfect finish. All radiators are illustrated in Traffic white unless stated.

### Colour Options

Colour options are available, see colour page.

### Water Treatment

Installation of the system should be properly flushed and fitted in accordance with the British Code of Practice for the Treatment of Water in Domestic Hot Water Central Heating Systems.

### Warranty

Henrad Arno Towel Rail Range come with a 5 year manufacturer's warranty.

### Heating Element

Option available.

For more information contact the sales office on 0844 543 6200



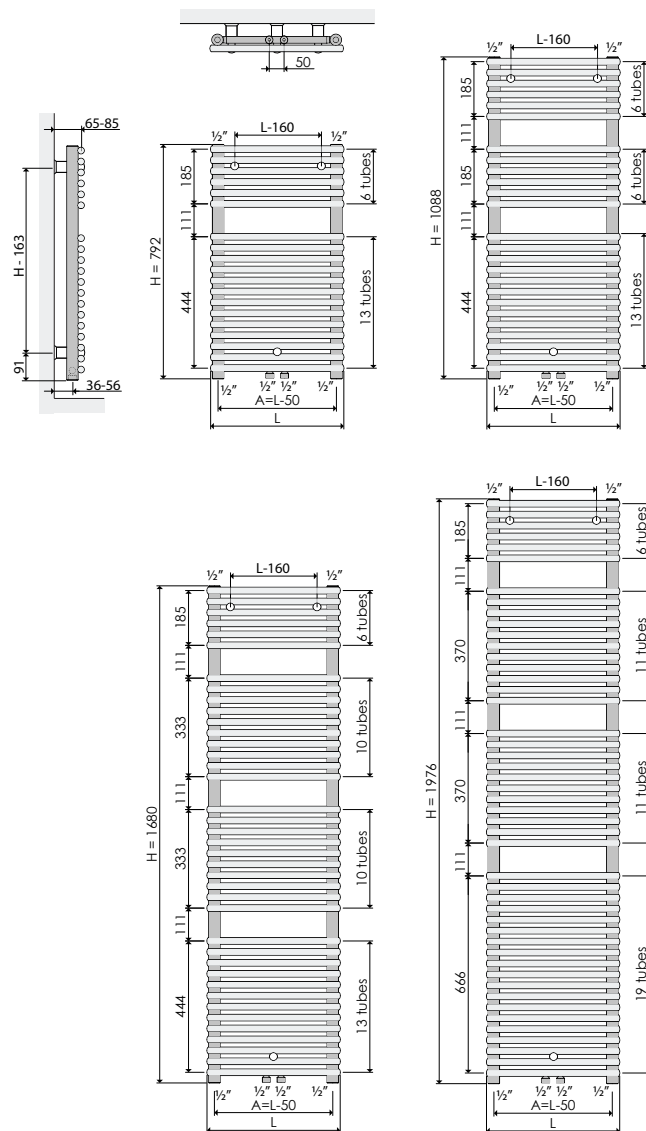
Henrad (UK) Limited, Marriott Road,  
Mexborough, South Yorkshire S64 8BN.  
Telephone: 0844 543 6200 Facsimile: 0844 543 6300

[www.henrad.co.uk](http://www.henrad.co.uk)

## Arno Towel Rail Range

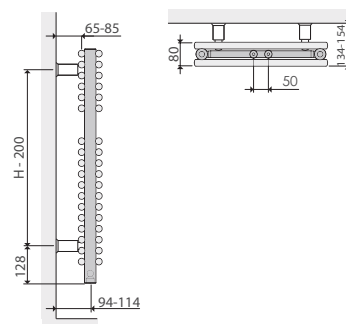
### Arno Single

All dimensions in mm unless stated.



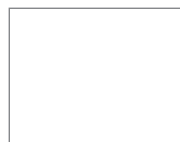
### Arno Double

All dimensions in mm unless stated.

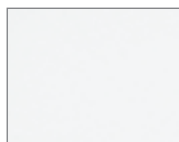


# Colour Range

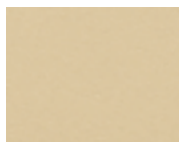
## Natural Colour



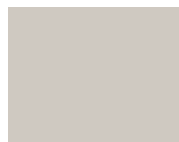
NT110  
Papyrus white  
510110



NT120  
Pearl white  
510120



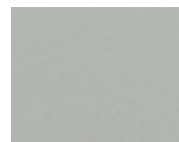
NT130  
Champagne  
510130



NT140  
Beige  
510140



NT150  
Beige grey  
510150



NT160  
Pebble grey  
510160



NT170  
Quartz grey  
510170



SN110  
Cream white  
530110



SN120  
Cream  
530120



SN130  
Mocca  
530130



SN140  
Bordeaux  
530140



SN150  
Sepia  
530150



SN160  
Pale blue  
530160

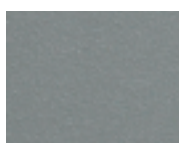


SN170  
Black  
530170

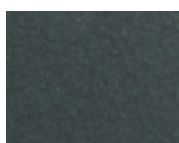
## Metallic Colour



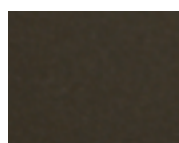
ML110  
Dove grey  
520110



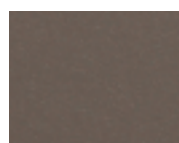
ML120  
Titanium grey  
520120



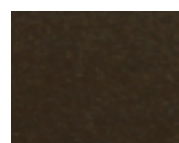
ML130  
Blue grey  
520130



ML140  
Granite  
520140



ML150  
Cappuccino  
520150



ML160  
Terra brown  
520160



ML170  
Graphite black  
520170

## RAL Colour



A1004  
Golden yellow  
541004



A2003  
Pastel orange  
542003



A3002  
Carmine red  
543002



A3003  
Robin red  
543003



A5002  
Ultramarine blue  
545002



A6018  
Yellow green  
546018



A7001  
Silver grey  
547001



A7011  
Iron grey  
547011



A7016  
Anthracite grey  
547016



A7030  
Stone grey  
547030



A7035  
Light grey  
547035



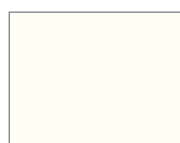
A8017  
Chocolate brown  
548017



A9003  
Signal white  
549003



A9005  
Jet black  
549005



A9016  
Traffic white



A7015  
Slate grey  
\*Only available for  
Column Concept

The colours shown throughout the brochure are reproduced as accurately as this process will allow and can be made to order on the identified products.

Price of coloured radiators are available on request. When a coloured radiator has been ordered it cannot be cancelled or returned. All coloured radiators have up to an 8 week lead time from date of order.