



Arno Single



Arno Double



Colours are made to order

Colour options available

For technical and installation information visit our website [www.henrad.co.uk/downloads](http://www.henrad.co.uk/downloads)

**Centre Tap TRV**  
Available from stock



UIN	Henrad Description
14531310	Centre TRV Set Straight White
14531410	Centre TRV Set Straight Chrome
14531510	Centre TRV Set Angled L White
14531610	Centre TRV Set Angled L Chrome
14531710	Centre TRV Set Angled R White
14531810	Centre TRV Set Angled R Chrome

### Arno Single

Height mm	Length mm	Henrad Code	UIN Colour*	Heat emissions	
				Watts	Btu/hr
792	450	417902450	417902451	408	1392
	500	417902500	417902501	452	1542
	600	417902600	417902601	540	1842
	750	417902750	417902751	672	2293
1088	450	411002450	411002451	560	1911
	500	411002500	411002501	615	2098
	600	411002600	411002601	725	2474
	750	411002750	411002751	890	3037
1680	450	411602450	411602451	849	2897
	500	411602500	411602501	929	3170
	600	411602600	411602601	1090	3719
	750	411602750	411602751	1331	4541
1976	450	411902450	411902451	985	3361
	500	411902500	411902501	1080	3685
	600	411902600	411902601	1271	4337
	750	411902750	411902751	1557	5312

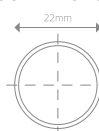
Btu/hr @  $\Delta t50^{\circ}\text{C}$

### Arno Double

Height mm	Length mm	Henrad Code	UIN Colour*	Heat emissions	
				Watts	Btu/hr
792	450	427902450	427902451	593	2023
	500	427902500	427902501	657	2242
	600	427902600	427902601	787	2685
	750	427902750	427902751	982	3351
1088	450	421002450	421002451	775	2644
	500	421002500	421002501	860	2934
	600	421002600	421002601	1030	3514
	750	421002750	421002751	1287	4391
1680	450	421602450	421602451	1200	4094
	500	421602500	421602501	1327	4528
	600	421602600	421602601	1583	5401
	750	421602750	421602751	1967	6711
1976	450	421902450	421902451	1409	4808
	500	421902500	421902501	1556	5309
	600	421902600	421902601	1852	6319
	750	421902750	421902751	2296	7834

Btu/hr @  $\Delta t50^{\circ}\text{C}$

#### Tube Dimensions



\*Price of coloured radiators are available on request. When a coloured radiator has been ordered it cannot be cancelled or returned. All coloured radiators have up to an 8 week lead time from date of order.

## Technical information

### Testing and Operating Pressures

Henrad Arno Towel Rail Range has been independently tested to ensure radiators perform to a maximum working pressure of 6.0 bar.

### Connections

Henrad Arno Towel Rail Range has 4 x 1/2" BSP connections as standard.

### Paint Process

Two coat paint process, each Henrad radiator is subjected to a multi-stage cleaning and paint process.

The final powder coat is Traffic white (RAL A9016) which is stoved and cooled to give a perfect finish. All radiators are illustrated in Traffic white unless stated.

### Colour Options

Colour options are available, see colour page.

### Water Treatment

Installation of the system should be properly flushed and fitted in accordance with the British Code of Practice for the Treatment of Water in Domestic Hot Water Central Heating Systems.

### Warranty

Henrad Arno Towel Rail Range comes with a 5 year manufacturer's warranty.

### Heating Element

Option available.

For more information contact the sales office on 0844 543 6200



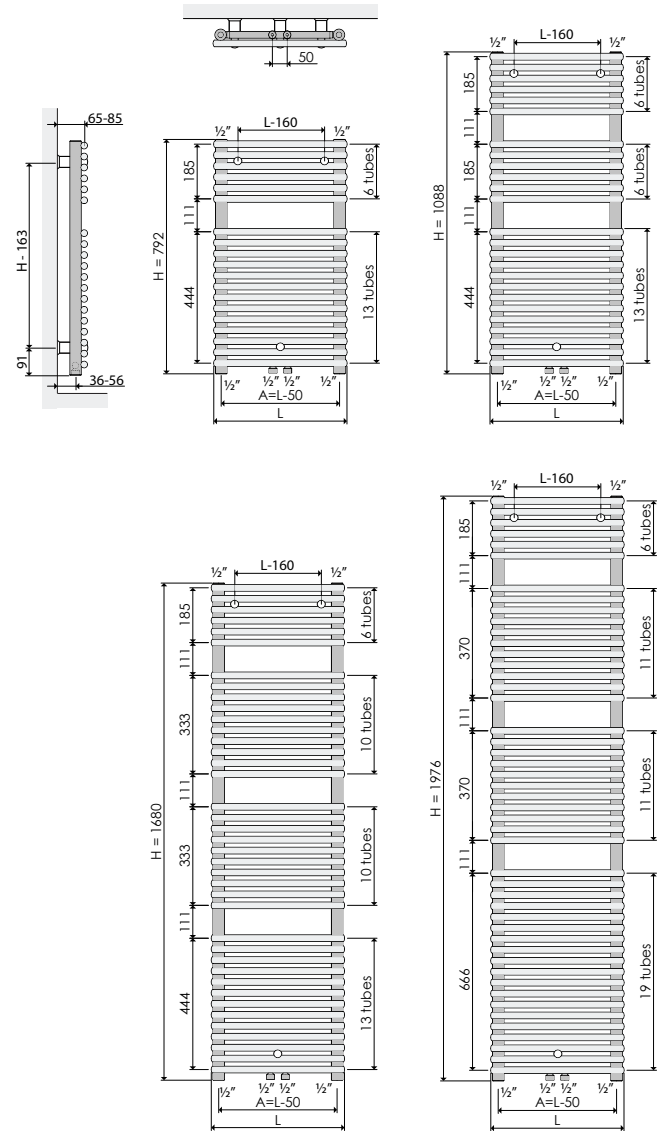
Henrad (UK) Limited, Marriott Road,  
Mexborough, South Yorkshire S64 8BN.  
Telephone: 0800 876 6813

[www.henrad.co.uk](http://www.henrad.co.uk)

## Arno Towel Rail Range

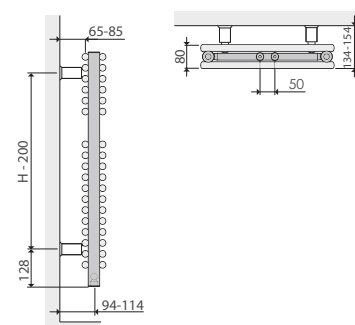
### Arno Single

All dimensions in mm unless stated.



### Arno Double

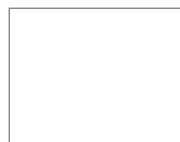
All dimensions in mm unless stated.



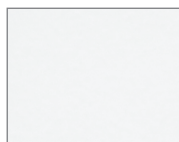
# Colour Range

The colours shown throughout the brochure are reproduced as accurately as this process will allow and can be made to order on the identified products. Price of coloured radiators are available on request. When a coloured radiator has been ordered it cannot be cancelled or returned. All coloured radiators have up to an 8 week lead time from date of order.

## Natural Colour



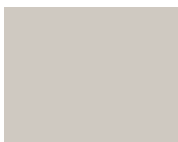
NT110  
Papyrus white  
510110



NT120  
Pearl white  
510120



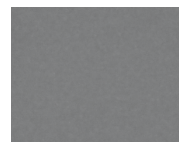
NT130  
Champagne  
510130



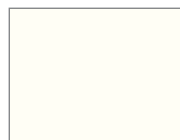
NT140  
Beige  
510140



NT160  
Pebble grey  
510160



NT170  
Quartz grey  
510170



SN110  
Cream white  
530110



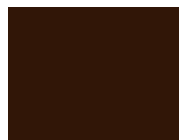
SN120  
Cream  
530120



SN130  
Mocca  
530130



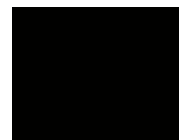
SN140  
Bordeaux  
530140



SN150  
Sepia  
530150



SN160  
Pale blue  
530160



SN170  
Black  
530170

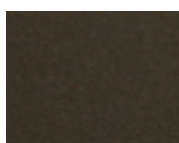
## Metallic Colour



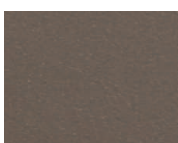
ML110  
Dove grey  
520110



ML120  
Titanium grey  
520120



ML140  
Granite  
520140



ML150  
Cappuccino  
520150



ML160  
Terra brown  
520160



ML170  
Graphite black  
520170

## RAL Colour



A1004  
Golden yellow  
541004



A2003  
Pastel orange  
542003



A3002  
Carmine red  
543002



A5002  
Ultramarine blue  
545002



A6018  
Yellow green  
546018



A7001  
Silver grey  
547001



A7011  
Iron grey  
547011



A7016  
Anthracite grey  
547016



A7030  
Stone grey  
547030



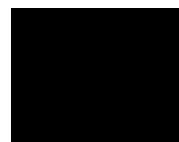
A7035  
Light grey  
547035



A8017  
Chocolate brown  
548017



A9003  
Signal white  
549003



A9005  
Jet black  
549005



A9016  
Traffic white

Natural Cast  
Available for Cast  
Iron Column only.

A7015  
Slate grey  
Available for Alto Line Concept, Column Concept,  
Column Vertical Concept, Everest Line Concept,  
Plan Concept, Plan Vertical Concept, Silhouette Concept,  
Verona Slimline Concept & Verona Vertical Concept.

For further information on RAL colours please visit [www.ralcolor.com](http://www.ralcolor.com)